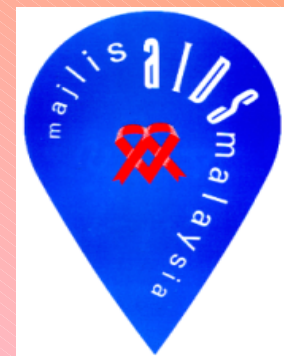




HIV/AIDS: Challenges for Humanity



Malaysian AIDS Council

What Is HIV?



Human

Immunodeficiency

Virus

Human Immunodeficiency Virus (HIV)

- ⊗ HIV is a retrovirus that attacks our immune system and destroys it over a period of time.
- ⊗ Only affects human beings.
- ⊗ Its presence can only be detected with an HIV antibody test.
- ⊗ Highly concentrated in blood, semen and vaginal fluid ; very little in tears and

Most Common ways of HIV transmission

- Ⓡ Sexual intercourse (vaginal and anal sex) without condoms
- Ⓡ Sharing of HIV-contaminated needles and injection equipment.
- Ⓡ From HIV-infected mothers to their babies during pregnancy or delivery, or through breastfeeding

Other ways*



HIV is transmitted

- Ⓡ Transfusion of HIV-contaminated blood or blood products
- Ⓡ Needle-prick injuries
- Ⓡ Transplant of HIV-infected organs

*less common ways; where transmission occurs, it is largely due to human error or negligence

HIV

and other STIs

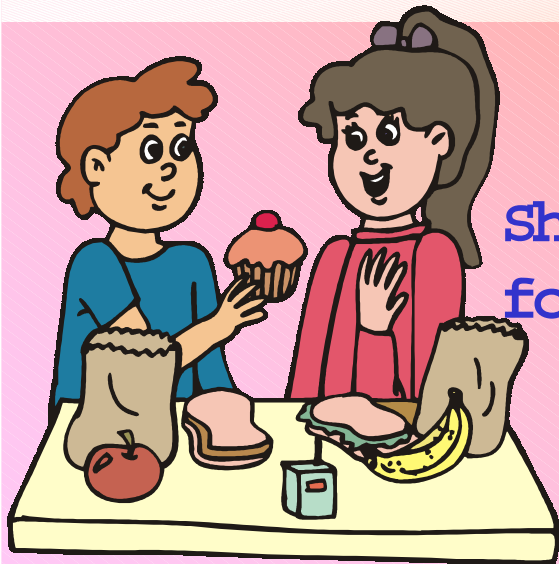
-  Any sexually transmitted disease (STI) can increase the risk of contracting or transmitting HIV
-  With and STI you have a 5 to 10 times higher risk of getting infected with HIV

HIV

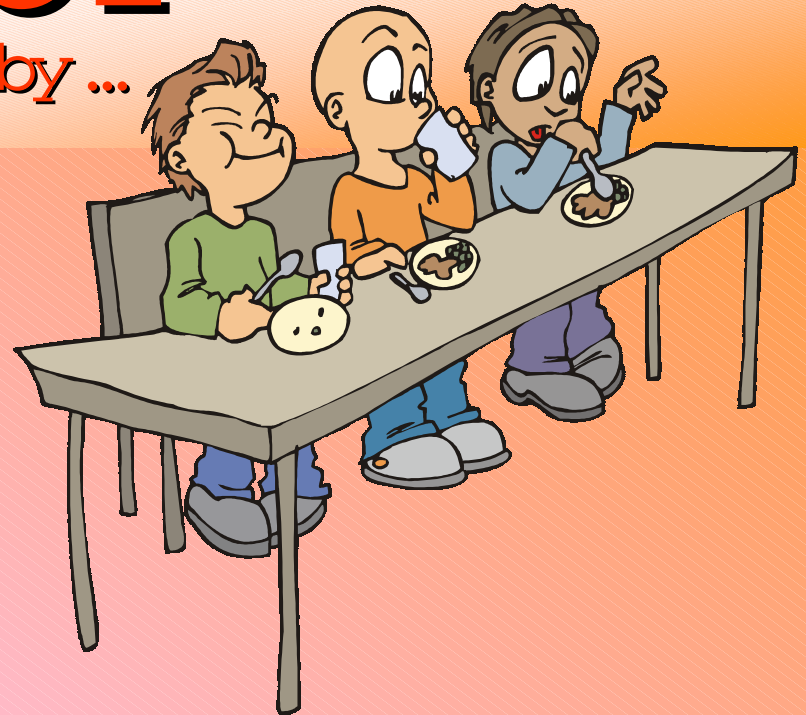
cannot be transmitted
through:

-  Sweat
-  Saliva
-  Tears
-  Urine
-  Mosquito bites

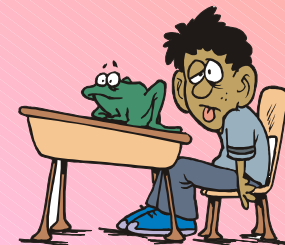
You
CANNOT
get HIV by ...



Sharing
food/drinks

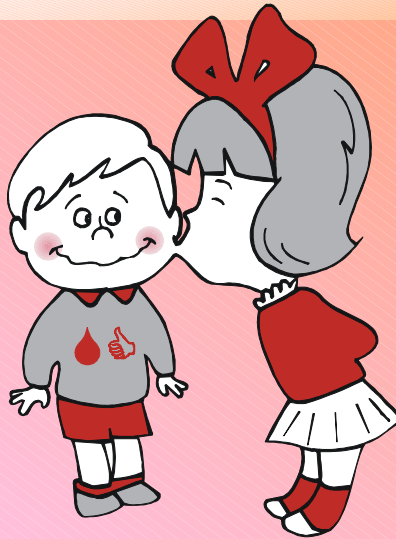


Studying/schooli
ng together

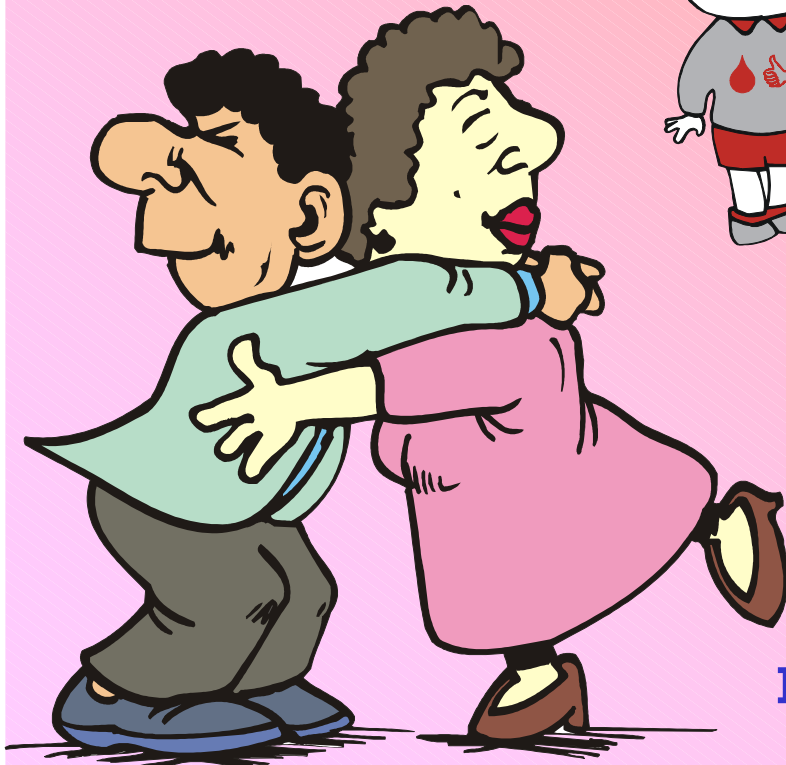


You
CANNOT
get HIV by ...

Kissing



Hugging

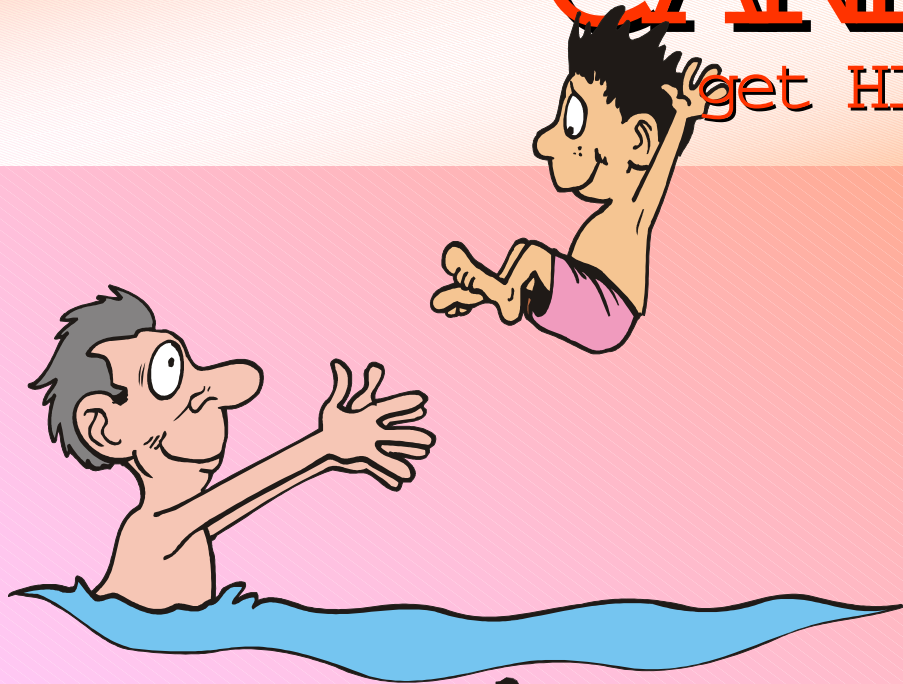


Playing together

You

CANNOT

get HIV by ...



Using public facilities i.e. swimming pool, telephones etc.

Sharing of beds/house/home equipments



HIV Antibody Test

- 🎗️ Looks for antibodies in the blood, not the HIV virus.
- 🎗️ Must be accompanied by pre- and post-test counseling.
- 🎗️ Window period - the period during which antibodies cannot be detected despite the possible presence of HIV. Can be up to six months but a person with HIV is infectious from **EARLY STAGE**.
- 🎗️ **Tests conducted are confidential.**

AIDS Research

- ⊗ No cure yet due to the mutating nature of the virus.
- ⊗ Much work being done on vaccines.
- ⊗ Combination Therapies - drugs to boost the immune system.
- ⊗ HAART (Highly Active Anti Retroviral Therapy) - suppress the virus and prolong life but very expensive.
- ⊗ Vaginal microbicides - for women.

What is AIDS?

Acquired

something that is not inherited.

Immune

the body's immune system which fights diseases.

Deficiency

not functioning properly.

Syndrome

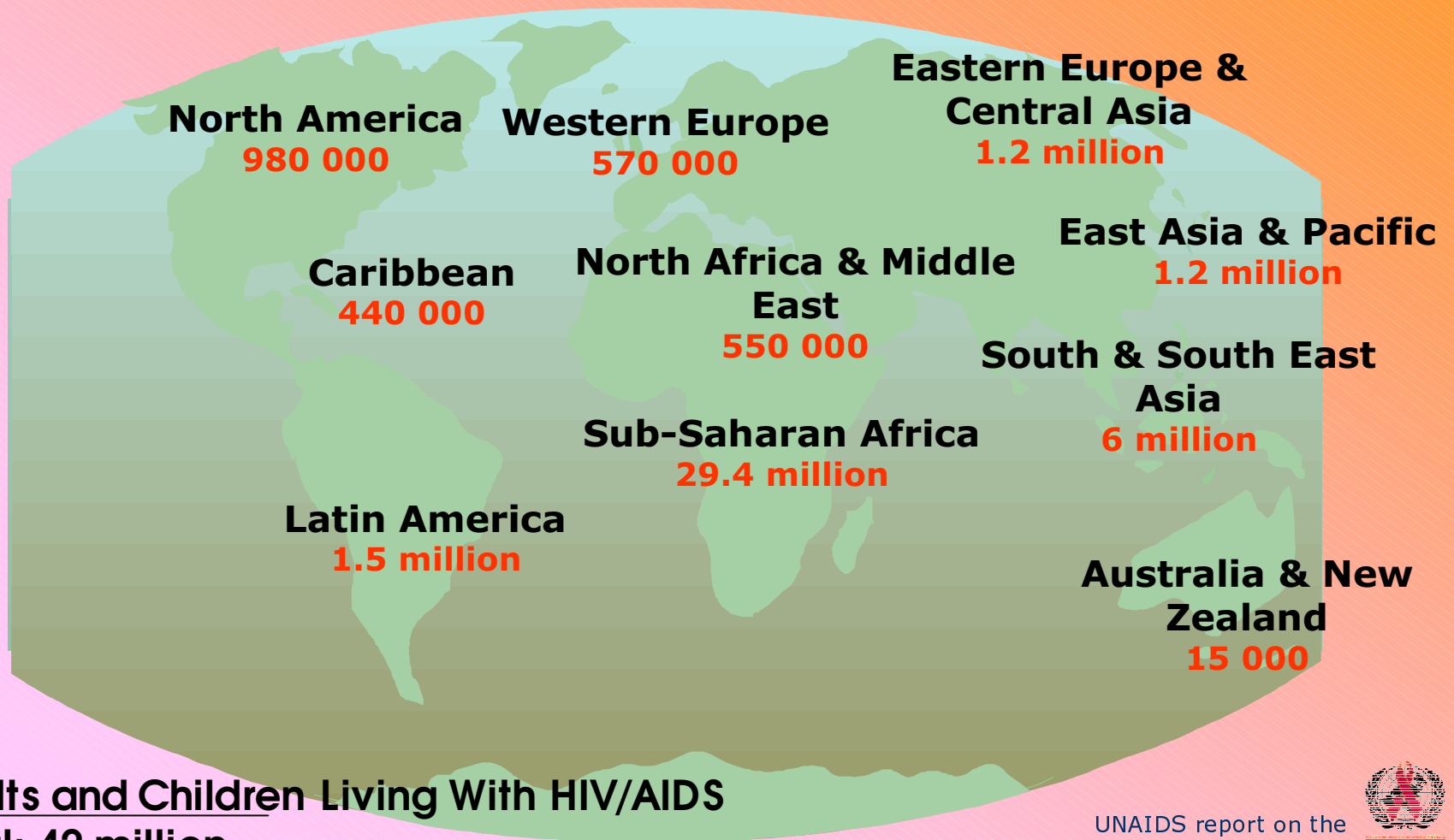
signs / symptoms of illnesses.

Acquired Immune Deficiency Syndrome (AIDS)

🎗️ AIDS is a condition when a person's immune system has been destroyed by HIV so that it is unable to defend the body from opportunistic diseases.

🎗️ These disease include Karposi's Sarcoma (KS), Pneumocystis Carinii Pneumonia (PCP), Tuberculosis.

Global Summary Of The HIV/AIDS Epidemic December 2002



Adults and Children Living With HIV/AIDS
Total: 42 million

UNAIDS report on the
Global HIV/AIDS
Epidemic, Dec 2002



Global Overview on HIV/AIDS

- 🎗 In 2002, as many as 800 000 children below 15 yrs. are newly infected with HIV.
- 🎗 89% of this figure lives in the sub-Saharan nations in Africa.
- 🎗 8% are in South Asia and South East Asia.
- 🎗 Only 2 - 3% are in Latin America and the Caribbean Islands.

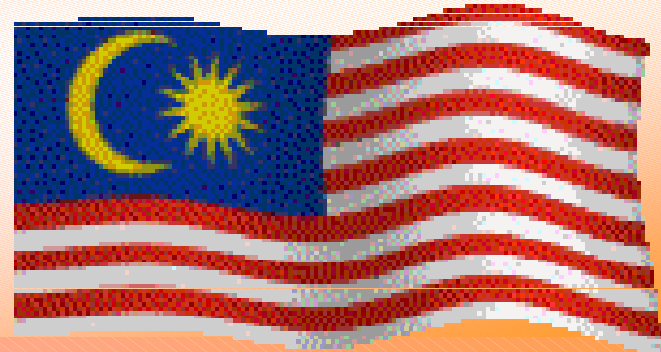
Global Overview on HIV/AIDS

As of Dec 2002, 42 million People
Living With HIV/AIDS worldwide

Worldwide, there were 3.1 million AIDS
deaths in 2002

>95% of HIV/AIDS cases → developing
countries

Malaysia



Dec 2002 – 51,256+ reported HIV/AIDS cases since 1986.

- 77% drug users.
- 81% aged 20 – 39 years.
- 94% men but number of women increasing.
- only 1% receives anti-retroviral therapy.

Overview on HIV/AIDS in Malaysia

☞ 51,256 reported cases of HIV/AIDS as of Dec 2002.

☞ Mostly drug users because they are subjected to mandatory testing.

☞ Heterosexual intercourse is the main mode of HIV/AIDS transmission.

☞ Increasing number of infected women and children.

HIV Infection, AIDS Cases reported in Malaysia

(1986 – June 2002)

Factor	Infection	%	AIDS		
			Cases	%	
Sex / Gender	Male	44,937	94.4	6,157	92.8
	Female	2,697	5.6	475	7.2
	TOTAL	47,634	100	6,632	100
Age Groups	< 2 years	102	0.2	20	0.3
	2 - 12 years	260	0.5	84	1.2
	13 - 19 years	780	1.6	185	2.8
	20 - 29 years	17,828	37.4	1,380	20.8
	30 - 39 years	20,536	43.1	2,996	45.2
	40 - 49 years	6,362	13.3	1,485	22.4
	> 50 years	1,129	2.3	459	7.0
	Unknown	637	1.3	23	0.3
TOTAL	47,634	100	6,632	100	

People Living With HIV/AIDS

- 🎗️ Tend to be poor, 'voiceless' and powerless.
- 🎗️ Suffer from stigmatization and discrimination. Their families also suffer.
- 🎗️ Very little support and care
- 🎗️ Need help to **LIVE**, not die.

Thank You

Malaysian AIDS Council

Tel: 03 40451033 Fax: 03 40426133

Toll-Free Line 1800 88 18 48

<http://www.mac.org.my>

